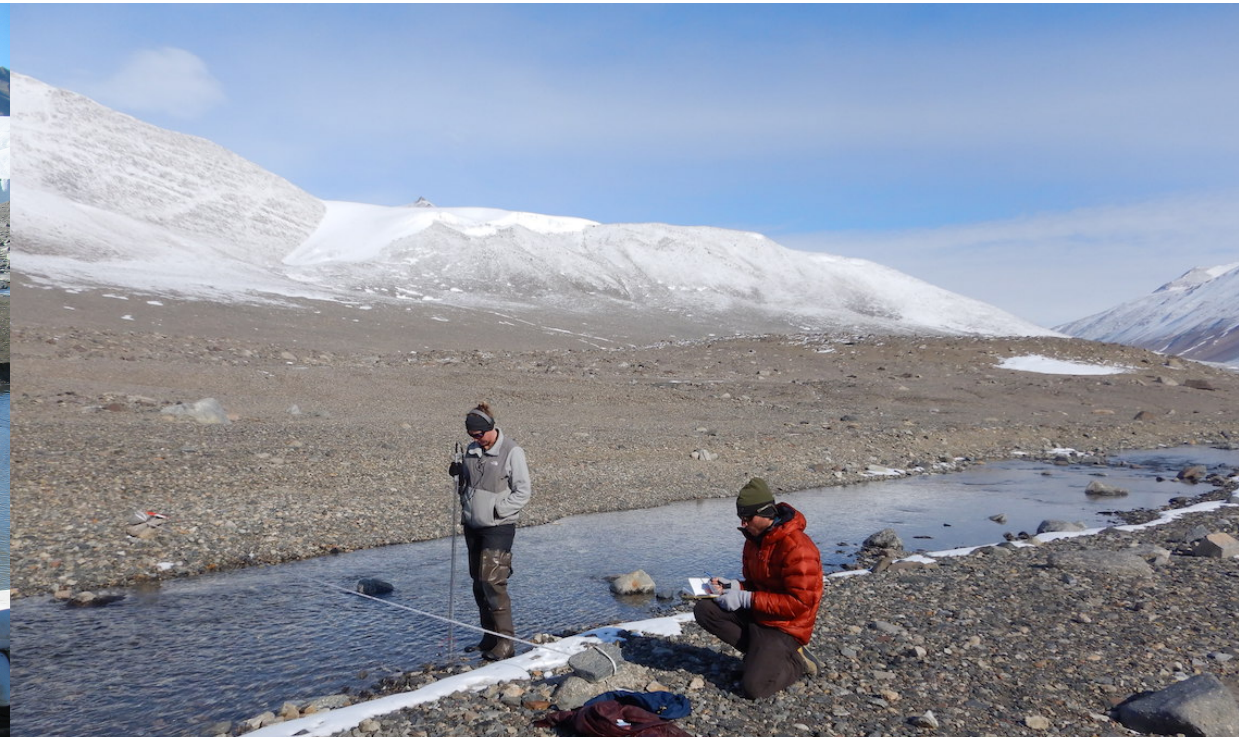


Ecosystem response to amplified landscape connectivity in the McMurdo Dry Valleys, Antarctica

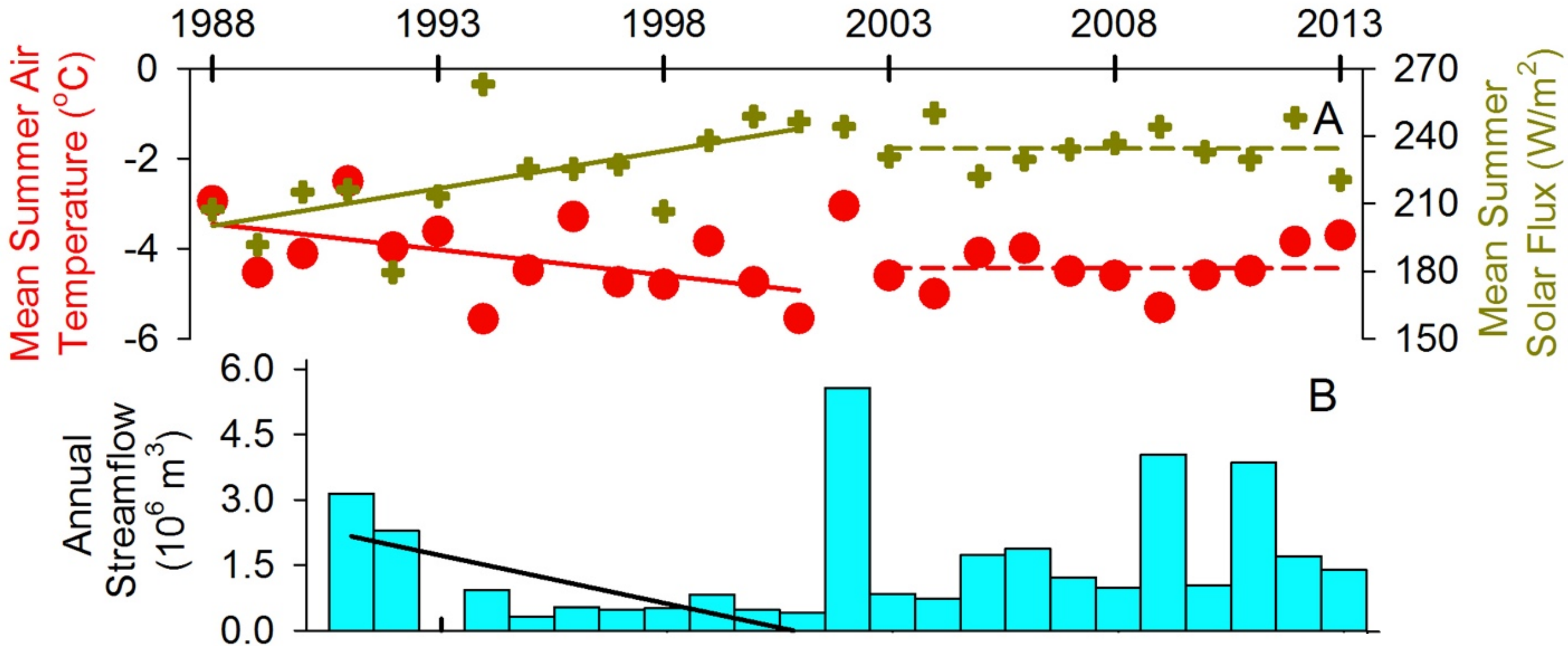


Streams connect for 2-3 mo/yr,



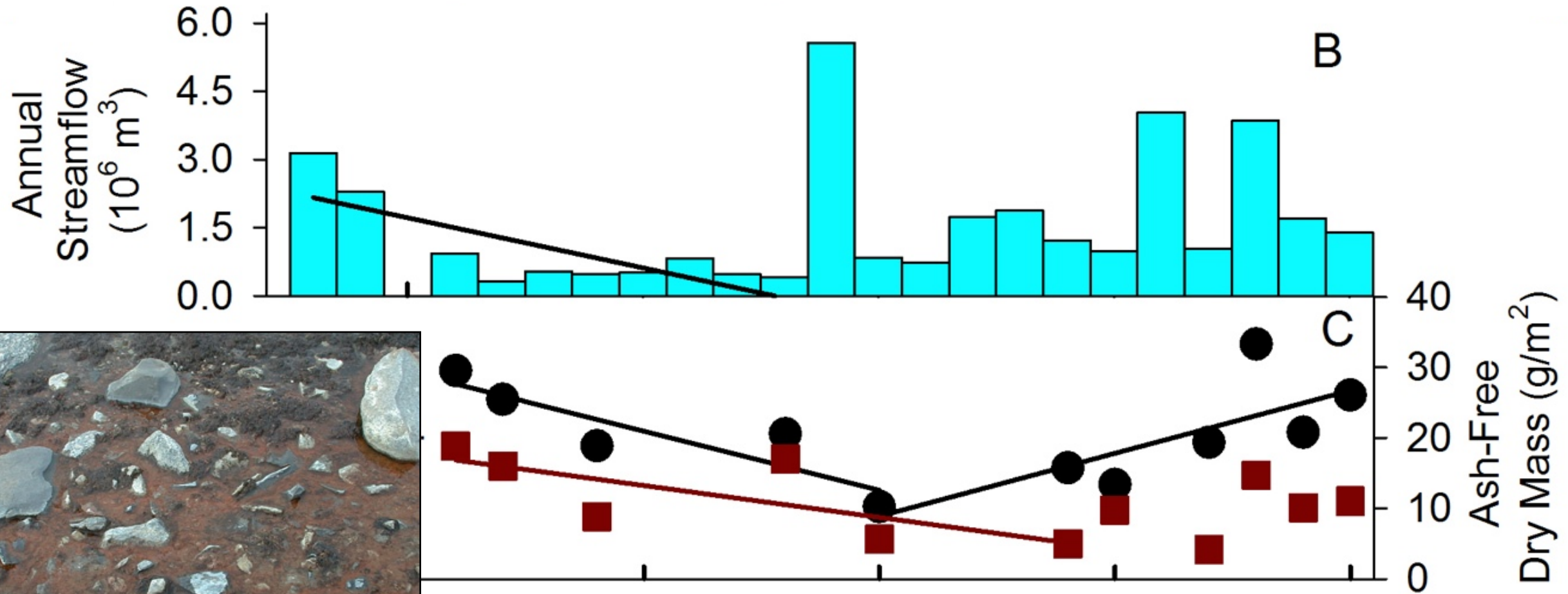
Gooseff et al., 2017 Nature Ecol. & Evol.

Streams connect for 2-3 mo/yr,



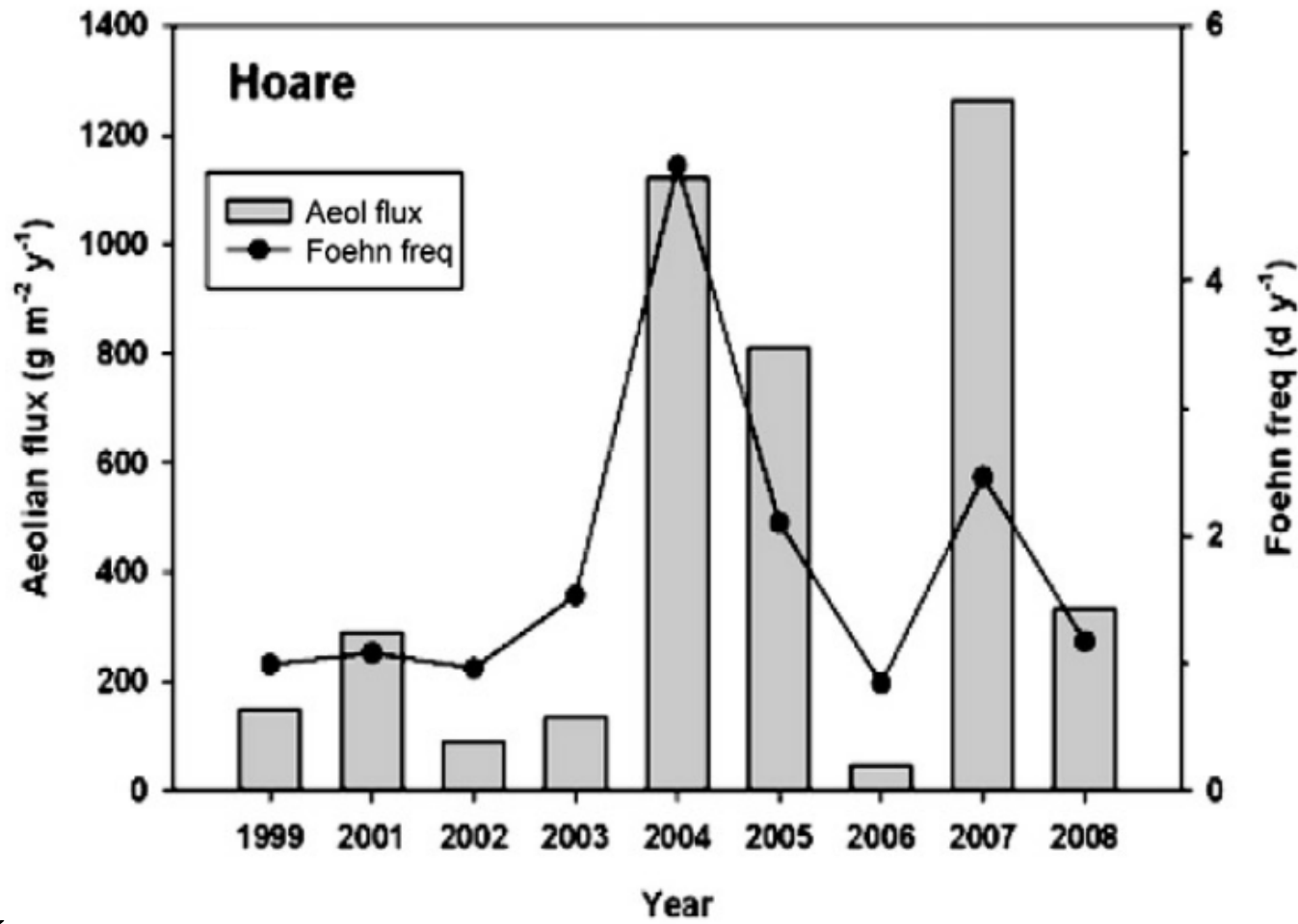
Gooseff et al., 2017 *Nature Ecol. & Evol.*

Streams connect for 2-3 mo/yr,



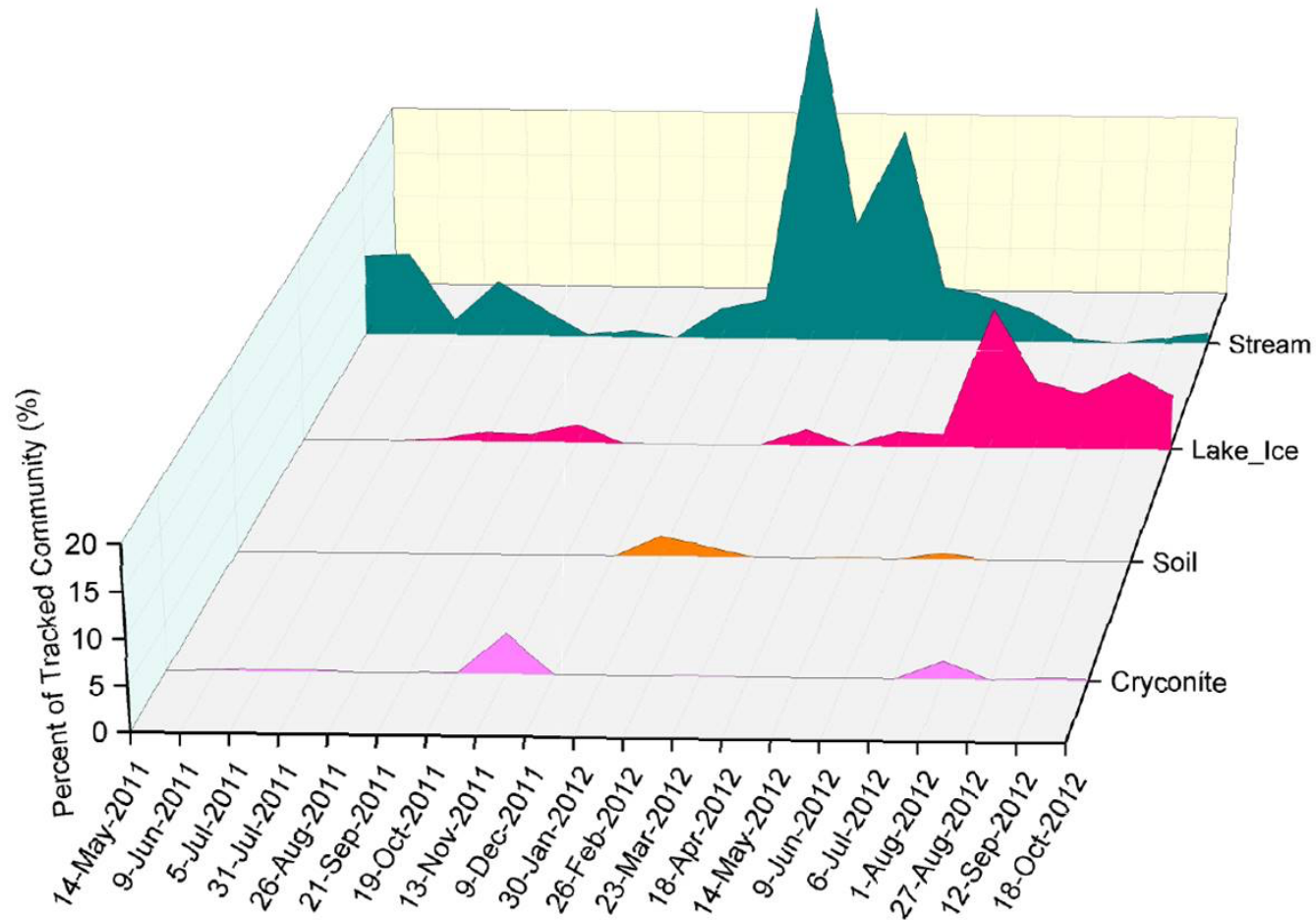
Gooseff et al., 2017 *Nature Ecol. & Evol.*

Wind connects landscape for 12 mo/yr

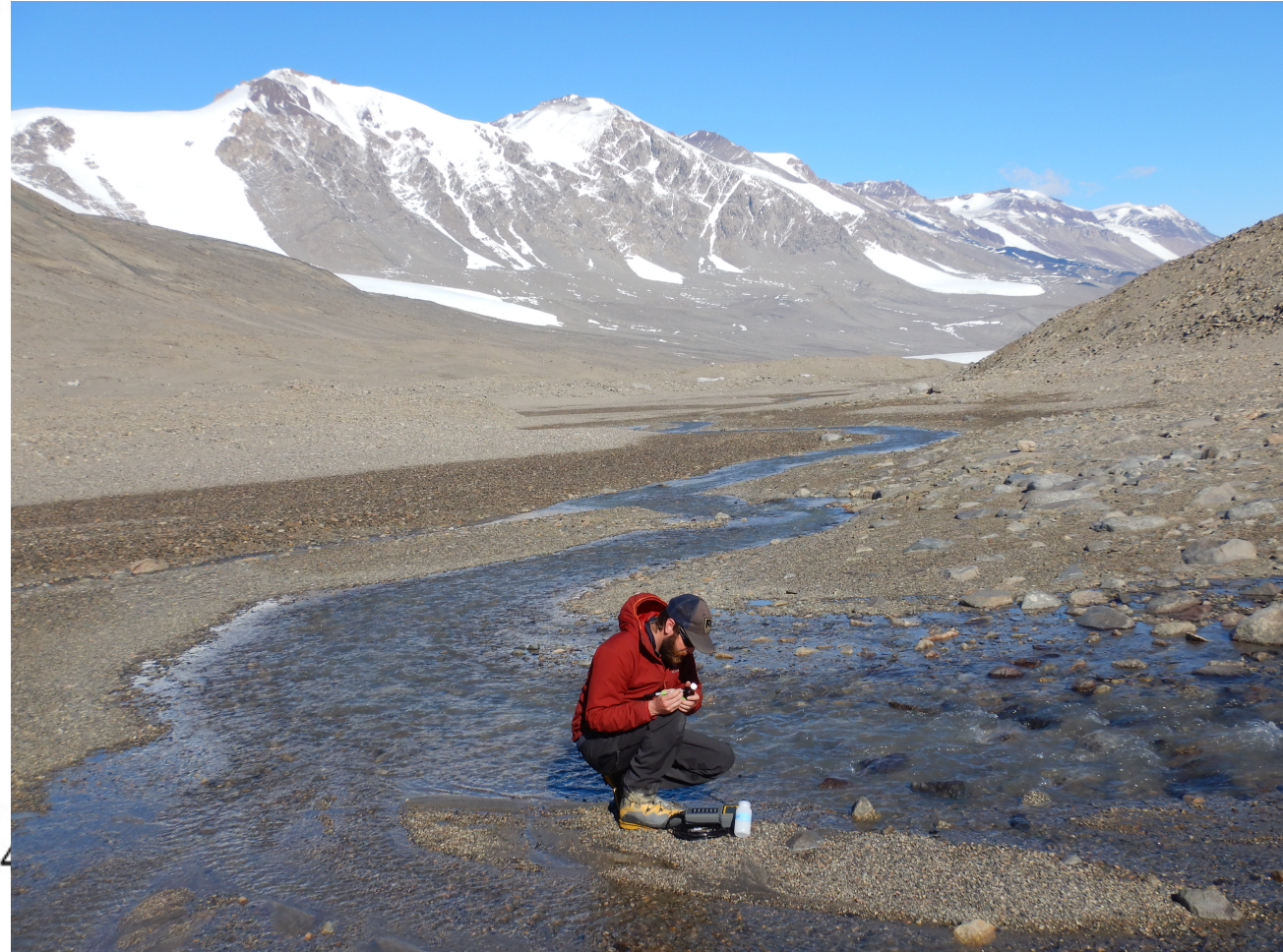
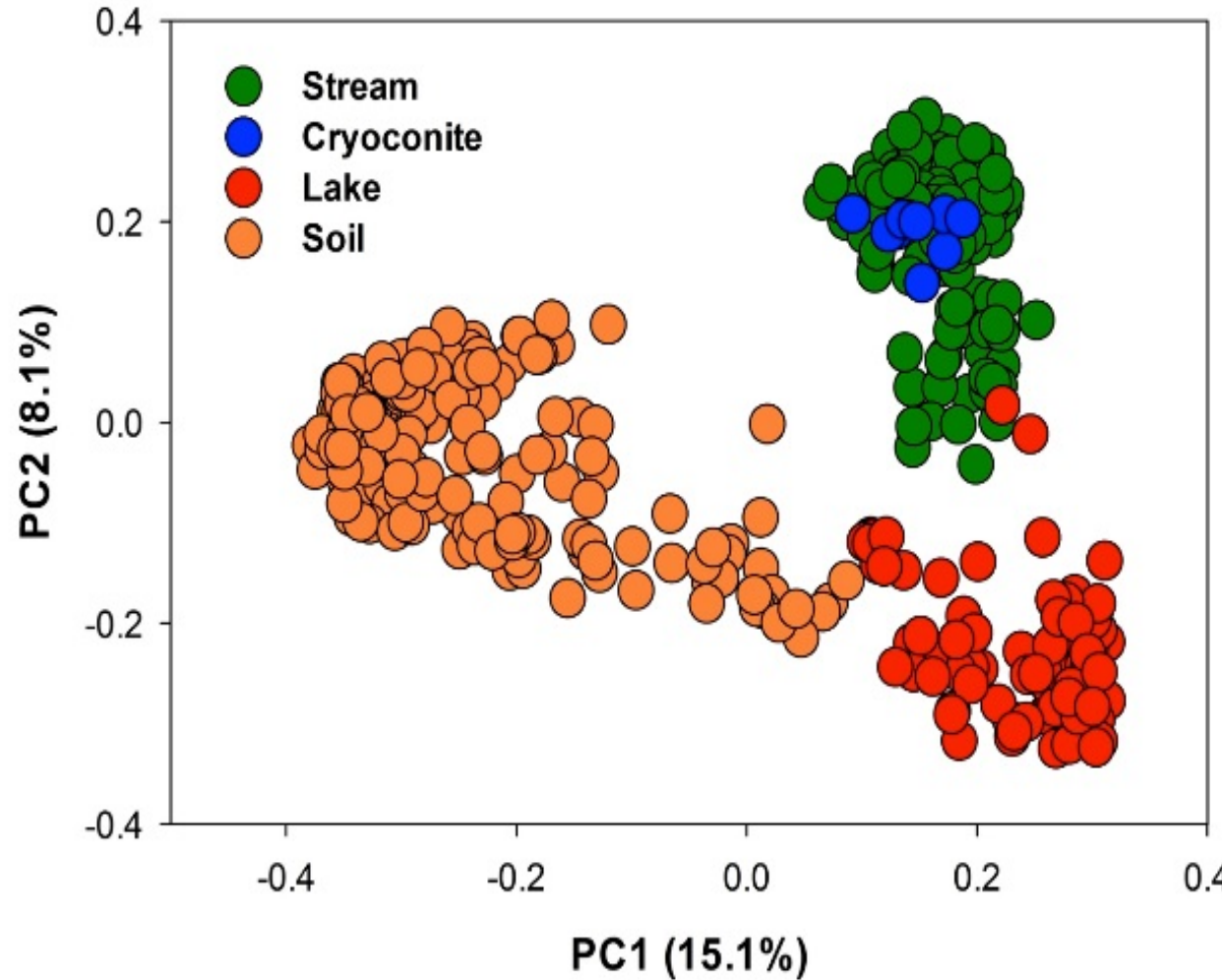


Šabacká et al., 2012 Geomorphology

Wind connects landscape for 12 mo/yr



Despite connectivity, habitat rules



So, to what extent does connectivity matter in your ecosystem?